



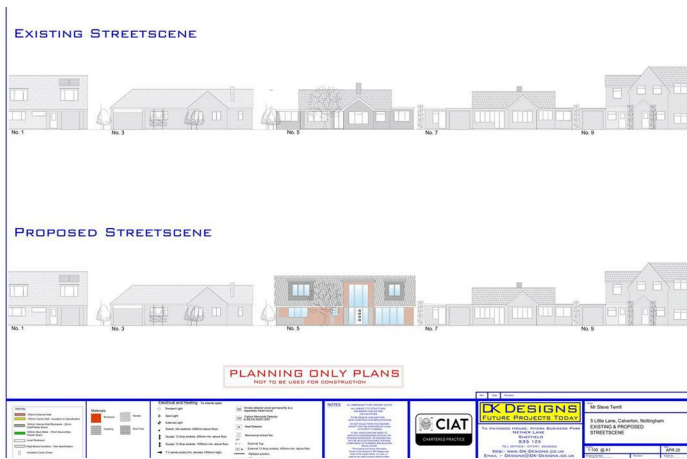
5 Little Lane
Calverton, Nottingham NG14 6JU
Asking Price £589,000 Freehold



5 Little Lane
Calverton, Nottingham NG14 6JU
Asking Price £589,000 Freehold

A unique opportunity to purchase a brand new four bedroom detached dormer home currently under construction in a quiet and secluded part of Calverton. Designed with modern, eco-conscious living in mind, the property will offer flexible accommodation, three bathrooms, open plan living space, parking for two cars and potential for buyer personalisation.





Ground Floor

Entrance Hall
13'0 x 8'0 approx (3.96m x 2.44m approx)

Lounge
20'0 x 13'0 approx (6.10m x 3.96m approx)

Kitchen/Dining Area
17'0 x 12'0 approx (5.18m x 3.66m approx)

Utility Room
7'0 x 6'0 approx (2.13m x 1.83m approx)

Bedroom Three
12'0 x 10'0 approx (3.66m x 3.05m approx)

Bedroom Four/Office
11'0 x 9'6 approx (3.35m x 2.90m approx)

En-Suite
7'0 x 4'6 approx (2.13m x 1.37m approx)

Bathroom
8'0 x 6'0 approx (2.44m x 1.83m approx)

First Floor

Master Bedroom
26'2" x 13'1" approx (8m x 4m approx)

En-Suite
8'0 x 5'0 approx (2.44m x 1.52m approx)



Bedroom Two

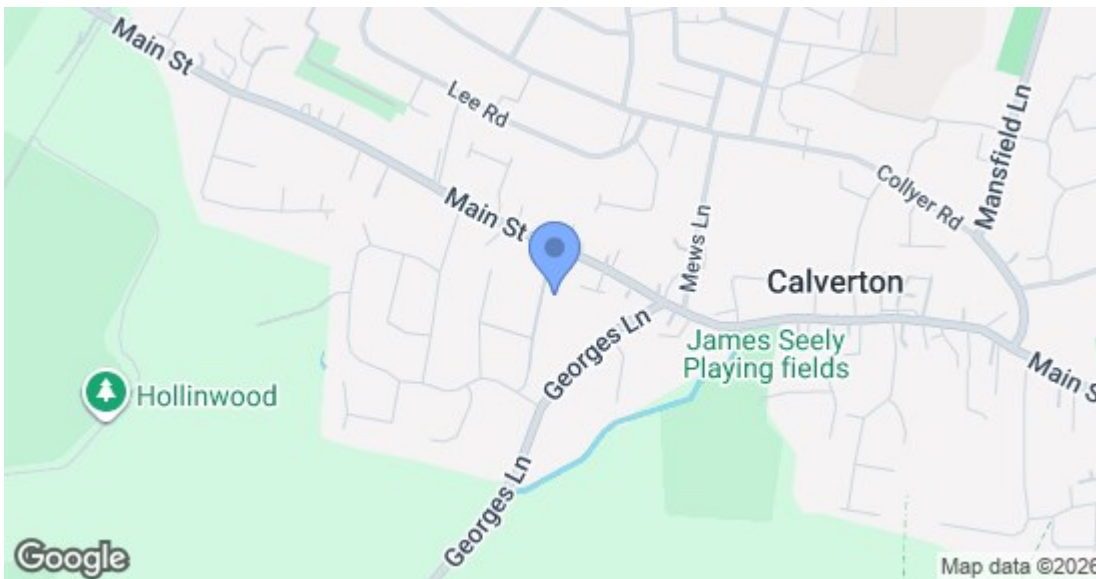
13'0 x 11'0 approx (3.96m x 3.35m approx)

Bathroom
8'0 x 6'0 approx (2.44m x 1.83m approx)

Agents Notes: Additional Information

- Electricity: Mains supply
- Water: Mains supply
- Heating: Mains gas
- Septic Tank : No
- Broadband: BT, Sky, Virgin
- Broadband Speed: Standard 16mbps Ultrafast 1000mbps
- Phone Signal: 02, Vodafone, EE, Three
- Sewage: Mains supply
- Flood Risk: No flooding in the past 5 years
- Flood Defences: No
- Non-Standard Construction: No
- Any Legal Restrictions: No
- Other Material Issues: No





Energy Efficiency Rating		
	Current	Potential
Very energy efficient - lower running costs		
(92 plus) A		
(81-91) B		
(69-80) C		
(55-68) D		
(39-54) E		
(21-38) F		
(1-20) G		
Not energy efficient - higher running costs		
EU Directive 2002/91/EC		
England & Wales		
Environmental Impact (CO ₂) Rating		
	Current	Potential
Very environmentally friendly - lower CO ₂ emissions		
(92 plus) A		
(81-91) B		
(69-80) C		
(55-68) D		
(39-54) E		
(21-38) F		
(1-20) G		
Not environmentally friendly - higher CO ₂ emissions		
EU Directive 2002/91/EC		
England & Wales		

These details are for guidance only and complete accuracy cannot be guaranteed. If there is any point, which is of particular importance, verification should be obtained. All measurements are approximate. No guarantee can be given with regard to planning permissions or fitness for purpose. No apparatus, equipment, fixture or fitting has been tested.